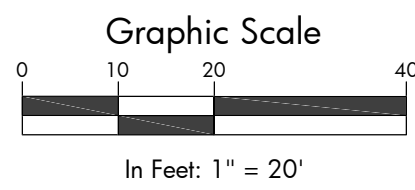
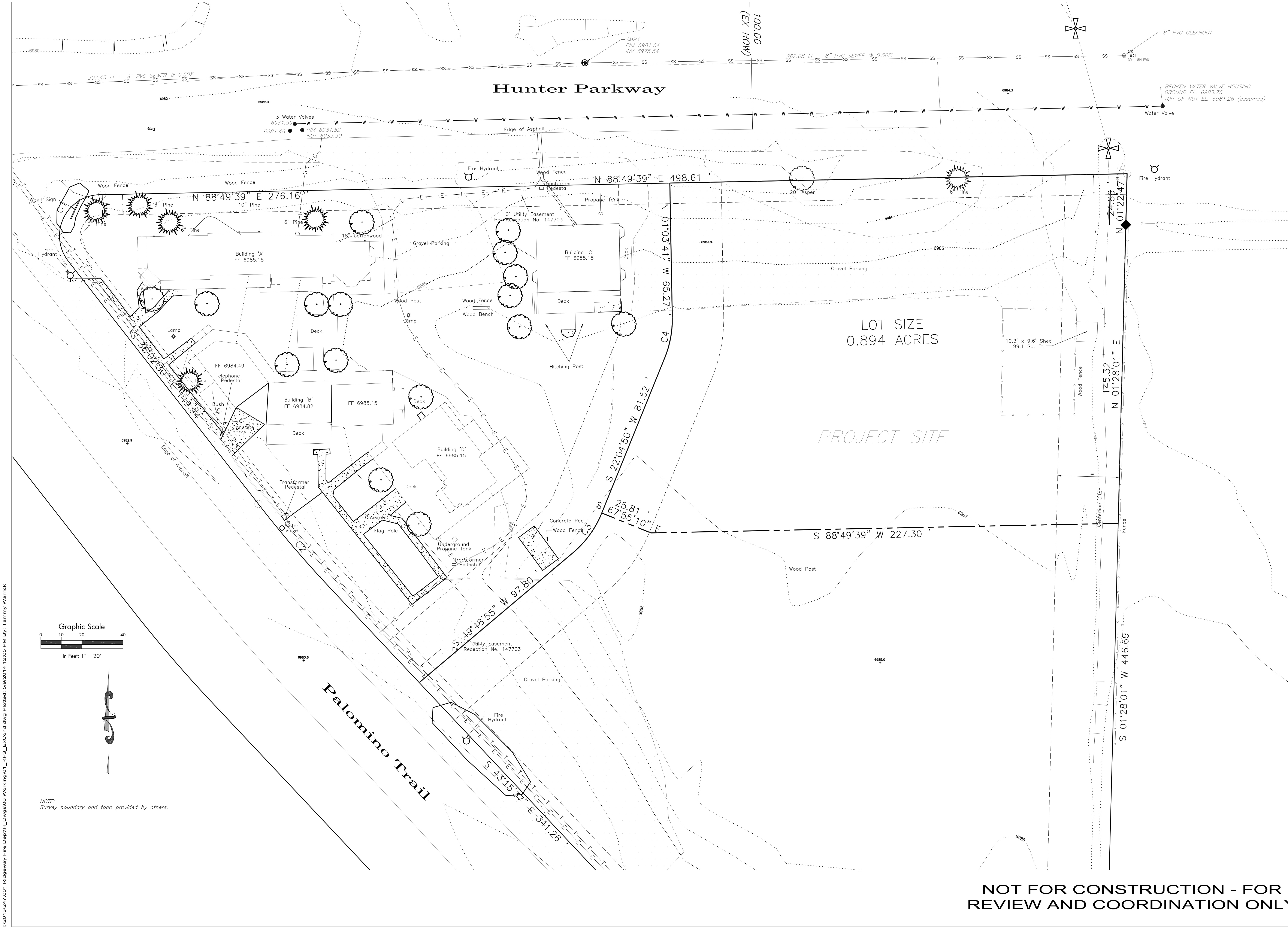


I:\2013\247.001 Ridgeway Fire Dept\H_Dwg\00 Working\01_RFS_ExtCond.dwg Plotted: 5/9/2014 12:05 PM By: Tammy Warrick



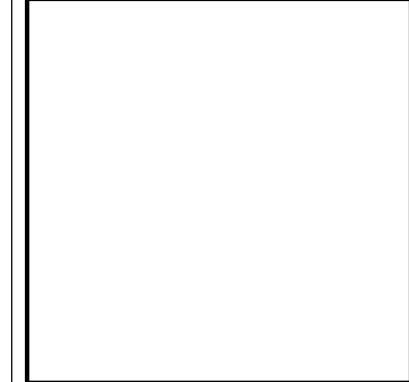
NOTE:
Survey boundary and topo provided by others.



NOT FOR CONSTRUCTION - FOR
REVIEW AND COORDINATION ONLY

RIDGWAY FIRE STATION
RIDGWAY FIRE PROTECTION DISTRICT
LOT 26-B1, RIDGWAY, CO 81432

| ISSUE LOG |
|------------------------|
| 05/09/14 BID DOCUMENTS |
| |
| |
| |
| |
| |
| |
| |
| |
| |

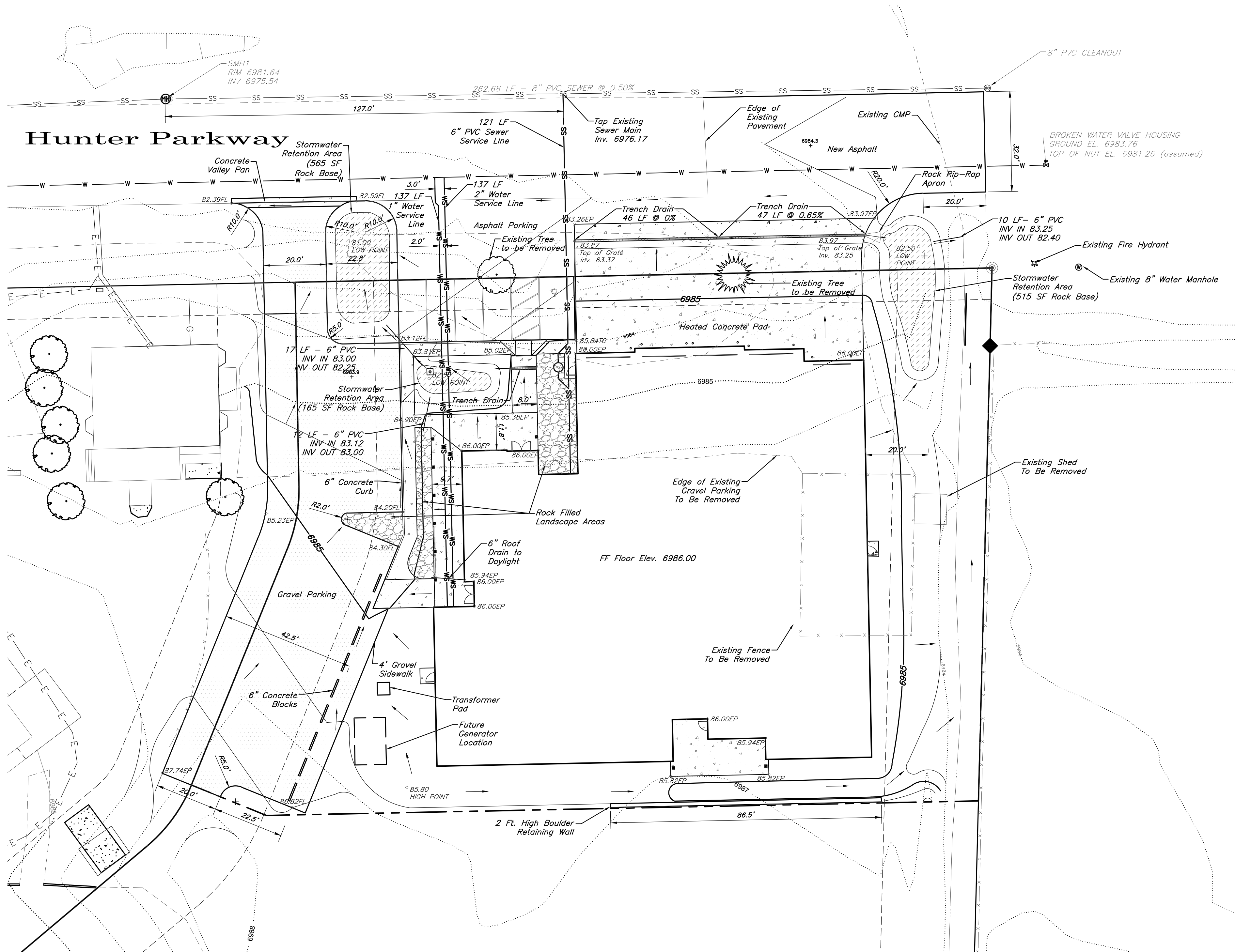


| EXISTING CONDITIONS |
|------------------------|
| |
| |
| |
| |
| |
| |
| |
| |
| |
| |

| |
|------------------------|
| PROJ. NO. 2013-247.001 |
| PROJECT DATE: 05/09/14 |
| SHEET NUMBER: |

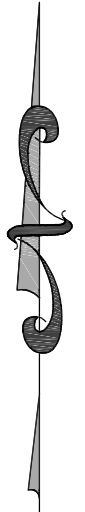
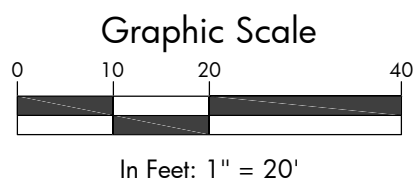
C1

I:\2013\247.001 Ridgeway Fire Dept\H_Dwg\500 Working\02_RFS_SitePlan.dwg Plotted: 5/9/2014 12:50 PM By: Tammy Warrick



Legend

| | | | |
|-------------|------------------------------------|---|-------------------------------|
| — T — | EXIST. TELEPHONE LINE | ⊞ | TELEPHONE RISER |
| — G — | EXIST. GAS LINE | ⊞ | CABLE RISER |
| — C — | EXIST. CABLE TELEVISION LINE | ⊞ | ELECTRIC TRANSFORMER |
| — E — | EXIST. UNDERGROUND ELECTRICAL LINE | ⊞ | EXIST. ELECTRIC MANHOLE/METER |
| — OE — | EXIST. OVERHEAD ELECTRICAL LINE | ⊞ | EXIST. STORM DRAIN INLET |
| — 8"W — | EXIST. WATER LINE & SIZE | ⊞ | EXIST. SEWER MANHOLE |
| — 8"S — | EXIST. SEWER LINE & SIZE | ⊞ | EXIST. WATER SPIGOT |
| — 4"SS — | EXIST. SEWER SERVICE & SIZE | ⊞ | EXIST. FIRE HYDRANT |
| — 4"SA — | EX. SEWER ASSUMED LOCATION & SIZE | ⊞ | WATER CURB STOP |
| — 3"SSA — | EXIST. SEWER SERVICE ASSUMED | ⊞ | EXIST. POWER POLE |
| — 4"S — | NEW SEWER LINE & SIZE | ⊞ | STREETLIGHT POLE |
| — SS — | NEW SEWER SERVICE | ⊞ | SIGN |
| — FM — | EXIST. FORCE MAIN | ⊞ | GAS VALVE |
| — 18" CMP — | EXIST. CULVERT & SIZE | ⊞ | NEW SEWER/STORM DRAIN |
| — — | SWALE FLOWLINE | ⊞ | MANHOLE W/ RIM LOCATION |
| — x — x — | FENCE LINE | ⊞ | EXIST. SEWER CLEANOUT |
| — — — — — | ROCK WALL | ⊞ | EXIST. GAS FEED LINE |
| — — — — — | EXIST. EDGE OF PAVEMENT | ⊞ | EXIST. GAS FEED LINE |
| — — — — — | PROPERTY LINE | ⊞ | |
| — — — — — | DECIDUOUS TREE | ⊞ | |
| — — — — — | EVERGREEN TREE | ⊞ | |
| — — — — — | MONUMENT MARKER | ⊞ | |



Site, Grading and Utility General Notes

Exterior Concrete:

- For all slabs exposed to elements concrete shall have a 4000 psi compressive strength after 28 days, 4% to 6% air entrainment and 1.5 lbs per cubic yard of fiber. Heated concrete paving shall have No. 4 reinforcing steel placed at 12" on center both directions in lieu of fiber.
- No. 4 reinforcing steel shall be placed 2" off the bottom of the slab and secured in place with chairs. Tooled control joints shall be placed 12' to 15' apart and equally spaced at a 1-1/2" depth.
- Heated concrete slabs shall be separated from non heated concrete with 1/2"
- Sidewalks shall be 5" thick, non-heated sidewalks do not require reinforcing steel. Sidewalk control joints shall be spaced a maximum of 10' apart.
- Exterior concrete shall receive a light broom finish with tooled edges and control joints.

Water and Sewer Service

- Follow all Town of Ridgway "Standard Specification and Typical Drawings for Infrastructure Construction". This document is available off the Town Website.
- Prior to excavation, contact Utility Locating service for locates.
- Public and employee safety is Contractor responsibility. Contractor shall fence, barricade and fully protect all excavations. No excavation shall be left open over night. Fencing and cover all excavations.

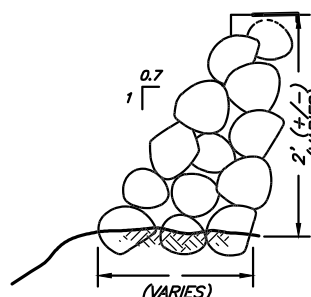
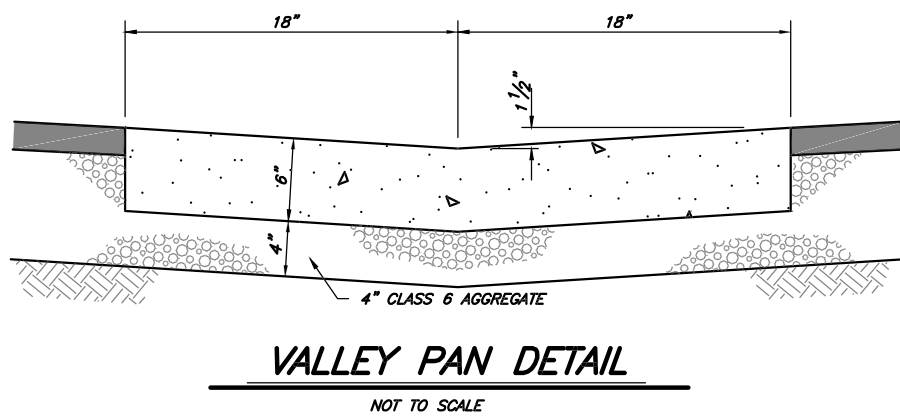
Site Grading and Drainage

Trench drain in concrete driveway shall be a McNichols "Pre-sloped" and standard section Heavy Duty Trench Drain system or approved equal. The intent is to place the west half of the trench drain bottom flat, the east half shall consist of the pre-sloped sections (0.65%). Contractor has the option to cast in place the trench drain box or use an equal product meeting H-20 wheel rating. If cast in place method is selected, the drain bottom shall slope 0.3" from west side to the east. Provide 6" concrete thickness around and below trench drain bottom.

Landscape Rock shall consist of 4" depth of 2" diameter river rock over weed barrier fabric.

Storm Water Retention area shall be graded as shown. The gradation of aggregates below the retention area bottom (limits of rock) shall consist of a 18" depth of 3" to 6" river rock over Mirifi 140N separation fabric.

Native Grass Area shall be seeded with an approved mix design of dryland pasture species consisting of: Crested Wheatgrass, Orchardgrass and Meadow Bromegrass.



- Use boulders as large as possible; minimum 6" diameter.
- Wall must have a 2:1 ratio base to height (i.e.: a 10' high wall needs a 20' base)
- The first row of boulders must be buried to 1/2 their diameter (and shall be 8" to 6" for this project).
- Add road base to first row of boulders, just enough to fill the voids. Do not grade the road base flat.
- Add next row of boulders and interlock to top of wall.
- Face of wall to be 3/4:1 maximum.

NOT FOR CONSTRUCTION - FOR
REVIEW AND COORDINATION ONLY

| |
|------------------------|
| ISSUE LOG |
| 05/09/14 BID DOCUMENTS |
| |
| |
| |
| |
| |
| |
| |



SITE/GRADING
PLAN

PROJ. NO. 2013-247.001

PROJECT DATE: 05/09/14

SHEET NUMBER:

C2